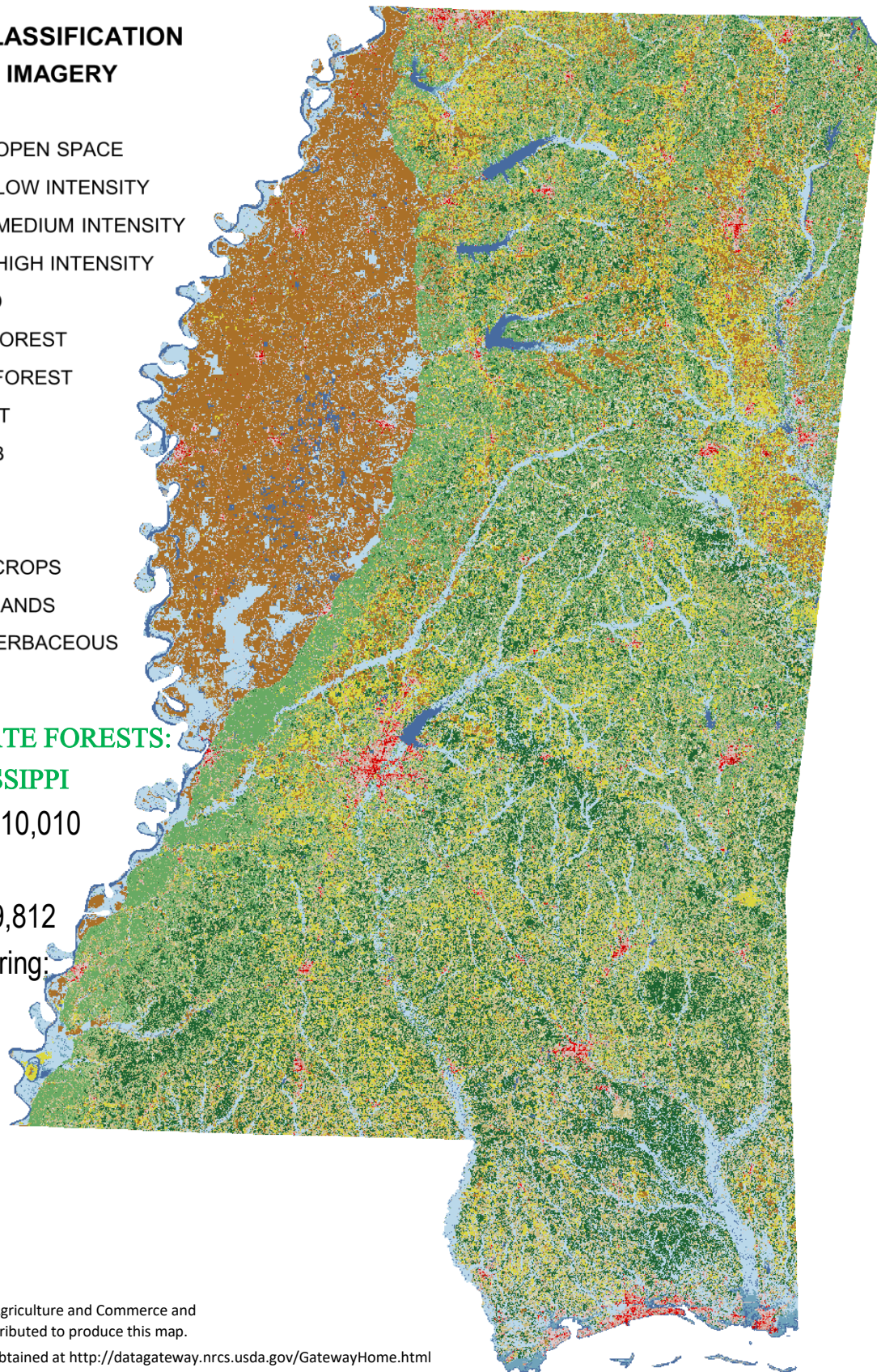
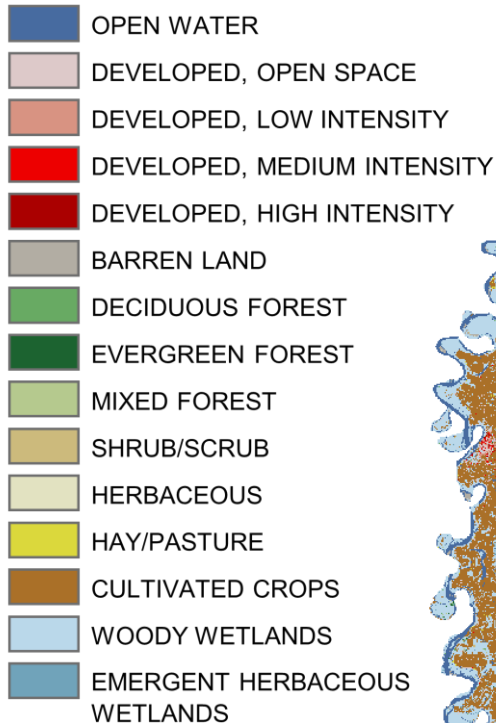


# Mississippi Land Cover Map

## LAND COVER CLASSIFICATION FROM SATELLITE IMAGERY



## WORKING PRIVATE FORESTS: STATE OF MISSISSIPPI

Private Acres: 17,010,010

Jobs: 46,724

Payroll: \$1,777,399,812

Sales & Manufacturing:

\$8,443,280,942

The Mississippi Department of Agriculture and Commerce and Mississippi State University contributed to produce this map.

Downloadable version may be obtained at <http://datagateway.nrcs.usda.gov/GatewayHome.html>

Acreage data from the US Forest Service's Forest Inventory Analysis, and NAFO.